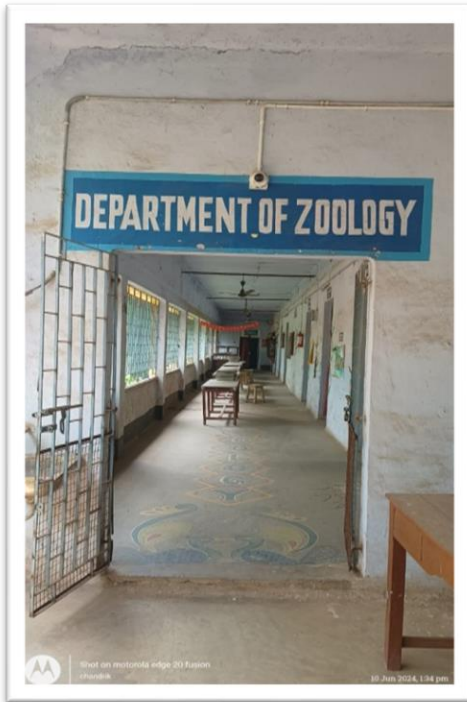


REPORT ON
ZOOLOGY
MUSEUM
SURI
VIDYASAGAR
COLLEGE

Journey and Milestones

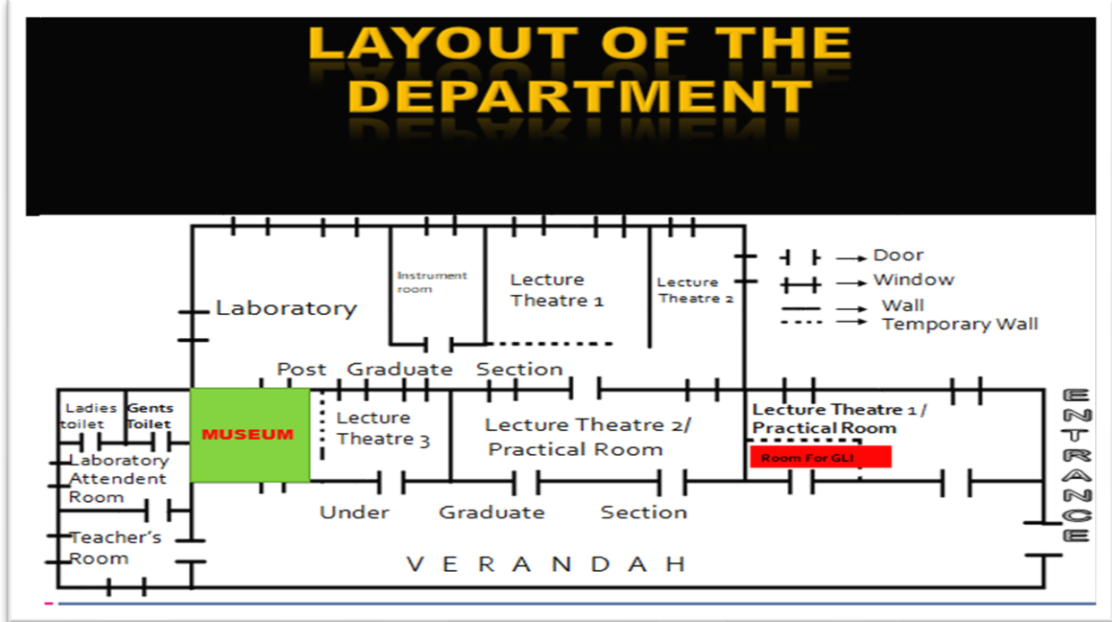
- **Establishment:** The Department of Zoology was established in 1961, marking the beginning of its academic and research endeavors.
- **Upgrade:** In 2007, the department was upgraded to a Post Graduate Teaching Department, allowing for the introduction of advanced courses and research programs.



ENTRANCE OF DEPARTMENT OF ZOOLOGY



ENTRANCE TO THE MUSEUM



LAYOUT OF THE DEPARTMENT OF

- **University Affiliation:** The department operates under the affiliation of the University of Burdwan, ensuring high academic standards and comprehensive curriculum development.

Zoology Museum

- **State-of-the-Art Facility:** The department features a state-of-the-art Zoology Museum.
- **Extensive Collection:** The museum houses a large collection of preserved animal specimens, ranging from Protozoa to Mammalia.
- **Skeletons for Study:** Includes skeletons of various animals, providing essential materials for comparative anatomy studies.





LIST OF SPECIMENS

PHYLUM PORIFERA

Sponge

Sycon

Spongilla

PHYLUM PLATYHELMINTHES

Fasciola

Tapeworm

PHYLUM NEMATHELMINTHES

Ascaris



PHYLUM CNIDERIA

Aurelia
Fungia
Porpita
Physalia
Veleva
Pennatula
Fungia
Madrepora
Gorgonia
virgularia
coral

PHYLUM ANNELIDA

Aphrodite
Arenicola
Chaetognathus
Nereis
Heteronereis
Polynoe
Leech
Megascolex
Sabella
Terebella
Sipunculus
Bonellia
Mermis
Eunice
Tubifex



PHYLUM ARTHROPODA

- | | | |
|-----------------------------|--------------------------|---------------------------|
| 1. <i>Balanus</i> | 13. <i>Penaeus</i> | 25. <i>Hawk moth</i> |
| 2. <i>Oniscus</i> | 14. <i>Termite queen</i> | 26. <i>Cicada</i> |
| 3. <i>Mantis</i> | 15. <i>Lepisma</i> | 27. <i>Danus larva</i> |
| 4. <i>Gelassismus</i> | 16. <i>Lepas</i> | 28. <i>Musca</i> |
| 5. <i>Hippa</i> | 17. <i>Palaemon</i> | 29. <i>Schizodactylus</i> |
| 6. <i>Squilla</i> | 18. <i>Vespa</i> | 30. <i>Julus</i> |
| 7. <i>Squilla</i> | 19. <i>Bellostoma</i> | 31. <i>Coleoptera</i> |
| 8. <i>Sacculina in crab</i> | 20. <i>Uca</i> | 32. <i>Nepa</i> |
| 9. <i>Buthus</i> | 21. <i>Eupagurus</i> | 33. <i>Spider</i> |
| 10. <i>Limulus</i> | 22. <i>Peripatus</i> | 34. <i>Cybiter</i> |
| 11. <i>Carcinoscorpius</i> | 23. <i>Mantis</i> | 35. <i>Scolopendra</i> |
| 12. <i>Diapheromera</i> | 24. <i>Odonata</i> | 36. <i>Hispa</i> |



PHYLUM MOLLUSCA

1. *Aplysia*
2. *Chiton*
3. *Doris*
4. *Patella*
5. *Loligo*
6. *Sepia*
7. *Octopus*
8. *Lingula*
9. *Xancus*
10. *Pinctada*
11. *Mytilus*
12. *Ostrea*
13. *Pholas*
14. *Pleurobranchia*
15. *Nautilus shell*
16. *Octopus*
17. *Achatina*
18. *Pila*

PHYLUM ECHINODERMATA

1. *Asterias*
2. *Astorpecten*
3. *Cucumaria*
4. *Ophiura*
5. *Echinus*
6. *Antedon*
7. *Holothuria*



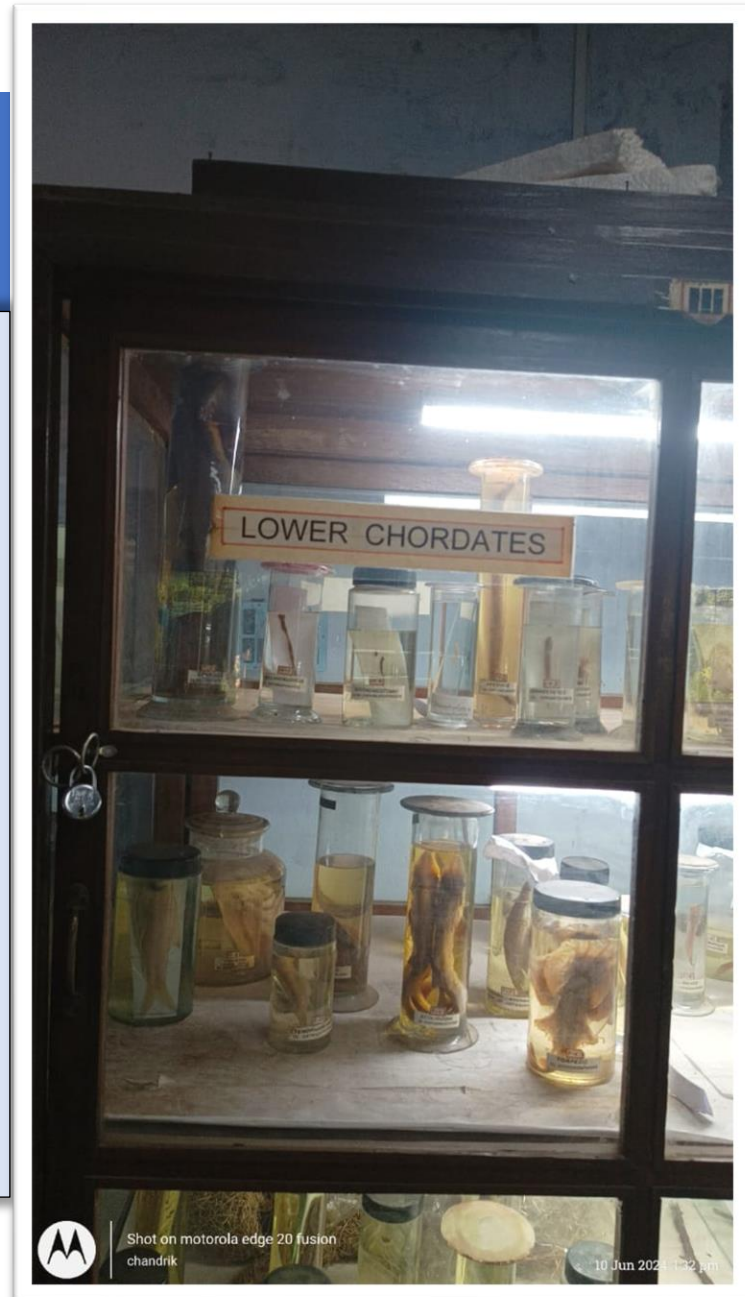
PHYLUM CHORDATA

LOWER CHORDATES

1. *Balanoglossus*
2. *Branchiostoma*
3. *Ascidia*
4. *Salpa*
5. *Doliolum*

AGNATHA

6. *Petromyzon*
7. *Myxine*
8. *Ammocoetes
larva*



Shot on motorola edge 20 fusion
chandrik

10 Jun 2024, 03:21 pm

PHYLUM CHORDATA

FISHES

1. *Echelus*
2. *Labeo orhita*
3. *Scotophagus*
4. *Glossogobius*
5. *Trichogaster*
6. *Mystus*
7. *Cirrhinus*
8. *Liza*
9. *Tetrodon*
10. *Rsatrilliger*
11. *Exocoetus*
12. *Berilius*
13. *Puntius*
14. *Sphyrna*
15. *Heteropneustes*
16. *Clairas*
17. *Hippocampus*
18. *Torpedo*
19. *Liza persica*
20. *Harpodon*
21. *Polynemus*
22. *Trachypterus*
23. *Mastacembulus*
24. *Boleophthalmus*
25. *Ribbon fish*
26. *Panchex*
27. *Flat fish*
28. *Hilsa Ilisha*
29. *Catla*
30. *Centricus*
31. *Flat fish*



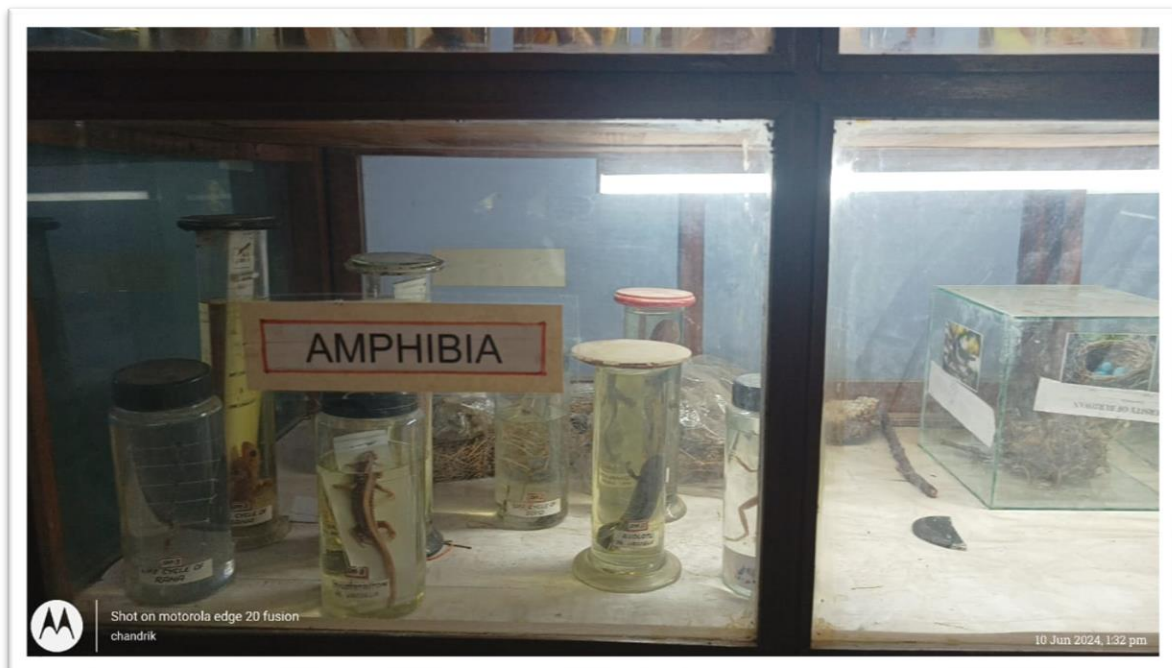
32. *Hilsa ilisha*
33. *Pyrachanda*
34. *Mugil*
35. *Hippocampus*
with brood
pouch
36. *Pampus*
37. *Notopterus*
38. *L. Calbasu*
39. *L. bata*
40. *Amphipnous*
41. *Anabas*
42. *Oreochromis*

43. *Channa*
striatus
44. *Cynoglossus*
45. *Anguilla*

PHYLUM CHORDATA

AMPHIBIA

1. *Salamandra*
2. *Ichthyophis*
3. *Tylototrton*
4. *Flying frog*
5. *Alytes*
6. *Necturus*
7. *Hyla*
8. *Rana*
9. *Bufo*
10. *Axolotl*
11. *Tadpole larva*



PHYLUM CHORDATA

REPTILIA

1. *Phyrnosoma*
2. *Mabuya*
3. *Geko*
4. *Typhlops*
5. *Chamaeleon*
6. *Russel viper*
7. *Bungauris*
8. *Aja*
9. *Natrix*
10. *Hemidactylus*
11. *Calotes*
12. *Tryonix*
13. *Amphiuma*
14. *Ptyas*
15. *Snakes*



PHYLUM CHORDATA

AVES

1. *Passer*
2. *Psittacula*
3. *Pycnonotus*
4. *King fisher*
5. *Alcedo*

MAMMALIA

1. *Suncus*
2. *Funnambulus*
3. *Bandicota*
4. *Vespertilio*
5. *Scotophilus*
6. *Pteropus*



Educational Impact

- **Hands-On Learning:** The museum offers hands-on learning experiences for both UG and PG students.
- **Enhanced Understanding:** Direct interaction with specimens helps students understand anatomical and morphological features deeply.

Commitment to Excellence

- **Quality Education:** The department is dedicated to imparting quality education and fostering a deeper understanding of zoological sciences.
- **Research Innovation:** Continues to inspire and nurture future zoologists and researchers through innovative research opportunities.



Conclusion

- **Distinguished Entity:** The Department of Zoology at the University of Burdwan is recognized for its academic excellence and significant contributions to the field of zoology.